

Northern Park
(See 1737_PL_P_01.06)

Landscape Plan - Courtyard Block 5
(See 1737_PL_P_02.1)

Landscape Plan - Roof Level Block 5, 6, & 7
(See 1737_PL_P_03.1)

Landscape Plan - Courtyard Block 7 & 9
(See 1737_PL_P_02.2)

Landscape Plan - Roof Level Block 9 & 10
(See 1737_PL_P_03.2)

Central Park
(See 1737_PL_P_01.05)

LEGEND

BOUNDARY LINE
See Hard Landscape and Feature Plan (Dwg. no. 1737_PL_P_01.01) for more information

SOFT LANDSCAPE
See Soft Landscape Plan (Dwg. no. 1737_PL_P_01.02) for more information

Existing Tree to be Retained

Resin Bound Tree Pit - 336 sq.m

Modular Soil Structure and Tree Pit System - 837 sq.m

Proposed Trees - 260 No.

Common Name	Species Name	Specification	No.
T1	London Plane	Platanus x azerbai	25
T2	Silver Line	Tilia tomentosa 'Bisland'	59
T3	Upright Hornbeam	Carpinus betulus 'Fastigiata'	15
T4	Common alder	Alnus glutinosa*	42
T5	Servicberry	Ameiobacchar lamarkii	30
T6	Eastern Redbud	Cercis canadensis	8
T7	Paperbark Maple	Acer griseum	19
T8	Common Hazel	Corylus avellana*	22
T9	Wild Cherry	Prunus avium*	15
T10	Birch	Betula pendula*	20

Residential Edging Buffer - 1782 sq.m

Residential Edging Buffer w/ Textured Screening - 285 sq.m

Groundcover Planting - 1620 sq.m

Housing Edging Buffer - 316 sq.m

Residential Street Planting Bays - 165 sq.m

Structured Edging Planting - 643 sq.m

Community Garden/Allotment Area Planting - 678 sq.m

Amenity Grass - 150mm min. Topsoil depth - 4540 sq.m
Coburn's Low Maintenance seed

Mounded Amenity Grass - 150mm min. Topsoil depth - 488 sq.m
Coburn's Low Maintenance seed

Reinforced Grass - 150mm min. Topsoil depth - 381 sq.m
Coburn's Low Maintenance seed

HARD LANDSCAPE
See Hard Landscape Plan (Dwg. no. 1737_PL_P_01.01) for more information

Concrete Footpaths - 2725 sq.m

Park/High Pedestrian Traffic Surfacing - 1694 sq.m

Feature Paving (Entrance and Seating Areas) - 411 sq.m

Phase 1 Streetscape Integration Paving - 1287 sq.m

Permeable Surface for On-Street Parking - 1185 sq.m

Shared/Vehicular Parking Entrance Surfacing - 67 sq.m

Main Street Shared Paving - 1791 sq.m

Northern Park Paving - 645 sq.m

Pedestrian Park Avenue Paving - 347 sq.m

Pedestrian Feature Paving - 762 sq.m

Pedestrian Paving Trim - 313 sq.m

Own Door Access Paving - 1777 sq.m

Gravel - 366 sq.m

Tactile Paving

Kerb Cutout

Kerb

Flush Kerb

Main Roadway - 2400 sq.m

Residential Roadway - 1567 sq.m

Tabled Intersection

FURNITURE ELEMENTS
See Hard Landscape and Feature Plan (Dwg. no. 1737_PL_P_01.01) for more information

Benches/Seawall - 50 no. Final locations to be determined

Bins - 7 no. Final locations to be determined

Bollards - 20 no. Final locations to be determined

Visitor Cycle Stands - 190 no (380 spaces)

Residential Cycle Stands
Own Door: 68 no (136 spaces), General Residential: 19 no (58 spaces)

Tree Grills - 22 no.

Standard Bus Shelter

MUGA (Multi Use Game Areas)

Playground Surfacing - 643 sq.m

Found Play Elements

Structured Play Elements

Site Lighting

Public Art Locations

Bin Pick-up Locations

Entrance Location

BOUNDARY TREATMENTS

Existing Boundary Treatment to be retained: General

Existing Boundary Treatment to be retained: St Bricks Boundary - 168 m

Boundary Wall to match adjacent building facade - 2 m

Residential Rear Rendered Block Boundary Wall (2m high) - 31 m

Residential Front Boundary (1.2m high) - 870 m

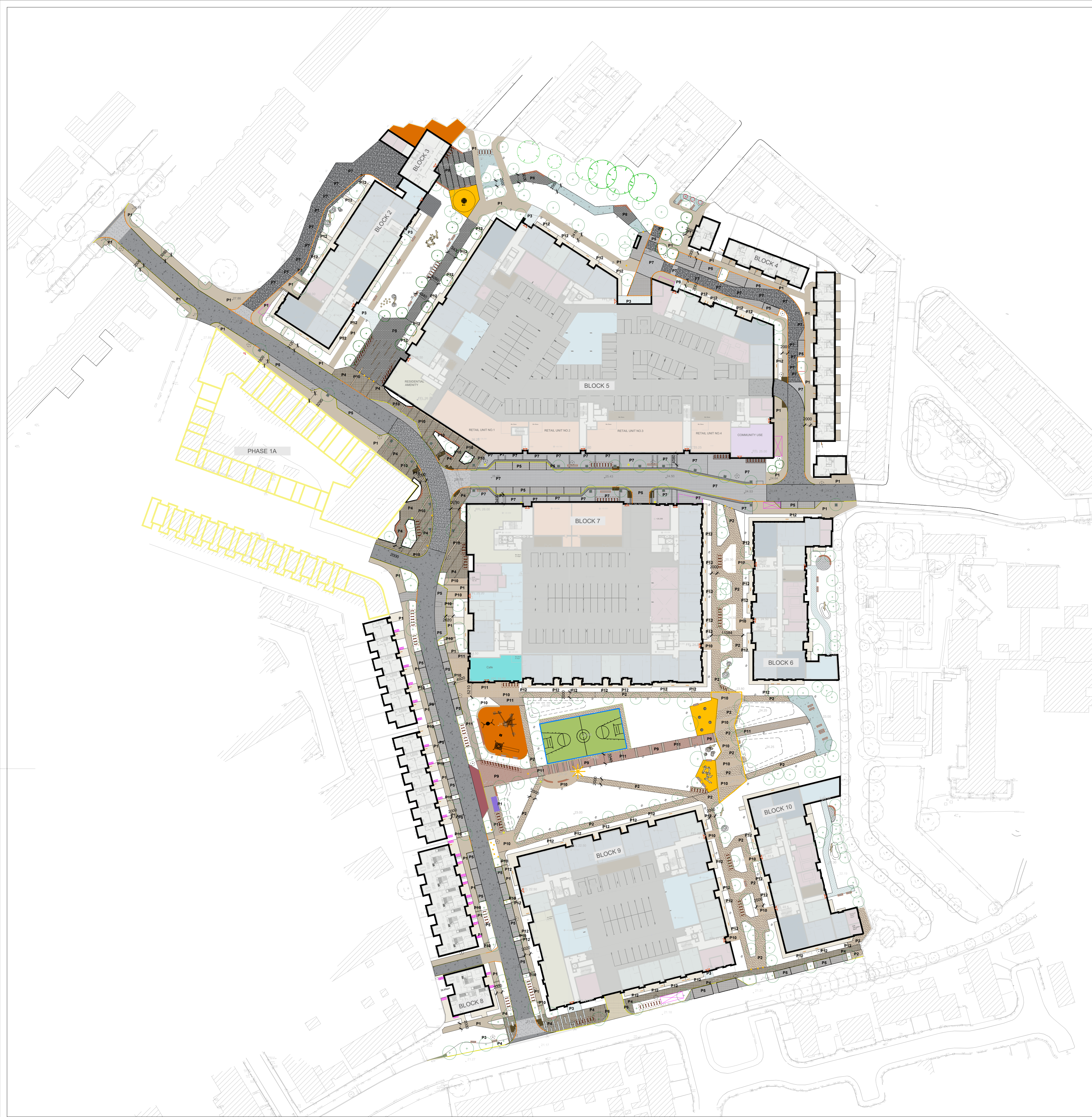
Residential Side Wall (1.8m high) - 195 m

Communal Garden fence: Existing fence to be replaced - 81m

Communal Amenity Space High Boundary - 63 m

Public Playground fence - 60 m

Private Playground fence - 43 m



HARD LANDSCAPE
See Hard Landscape Details (Dwg. no. 1737_PL_D_01) for more information

P1 Concrete Footpaths - 2725 sqm
Shot blasted finish, non-slip. Detail to be determined by civil engineers
See 1737_PL_D_01.02 for details

P2 Park/High Pedestrian Traffic Surfacing - 1694 sqm
Camber Graded Masticoid or Marshall asphalt, hot rolled with light grey/white graphic chipping. Detail to be determined by civil engineers
See 1737_PL_D_01.14 for details

P3 Feature Paving (Entrance and Seating Areas) - 411 sqm
PC granite composite block paving or similar, dim. 200x100x50mm and 100x100x80mm mix, colour Silver, Blanc, Mid Grey 60:20:20. Staggered bond pattern, or similar, as approved
See 1737_PL_D_01.01 for details

P4 Phase 1 Streetscape Integration Paving - 1287 sqm
Tobemore Square paving or similar, dim. 150x150x50mm, colour Bracken with Charcoal accent colour, see plan for detail. Stretcher bond pattern, or similar, as approved
See 1737_PL_D_01.01 for details

P5 Permeable Surface for On-Street Parking - 1185sqm
Tobemore Hydrovane Pedestal Pavers, dim. 200x100x50mm, colour Natural (Parking Dividers to be Charcoal), stretcher bond pattern, or similar, as approved
See 1737_PL_D_01.01 for details

P6 Shared/Vehicular Parking Entrance Surfacing - 17 sqm
Tobemore City Pavers, dim. 300x150x100mm, colour Graphite, Mid-Grey 90:10, stretcher bond pattern, or similar, as approved
See 1737_PL_D_01.01 for details

P7 Main Street Shared Paving - 1791 sqm
Tobemore City Pavers, dim. 300x150x100mm, colour Graphite with contrasting tactile pavers, stretcher bond pattern, or similar, as approved
See 1737_PL_D_01.01 for details

P8 Northern Park Paving - 645 sqm
PC concrete block with granite aggregate finish or similar, dim. 200x100x50mm and 100x100x80mm mix, colour Mid Grey, Noir, Silver 60:20:20. Staggered bond pattern, or similar, as approved
See 1737_PL_D_01.01 for details

P9 Pedestrian Park Avenue Paving - 347 sqm
PC concrete block with granite aggregate finish or similar, dim. 200x100x50mm and 100x100x80mm mix, colour to be decided. Staggered bond pattern, or similar, as approved
See 1737_PL_D_01.01 for details

P10 Pedestrian Feature Paving - 762 sqm
PC concrete block with granite aggregate finish or similar, dim. 200x100x50mm and 100x100x80mm mix, colour to be decided. Staggered bond pattern, or similar, as approved
See 1737_PL_D_01.01 for details

P11 Pedestrian Paving Trim - 313 sqm
PC concrete block with granite aggregate finish or similar, dim. 200x100x50mm and 100x100x80mm mix, colour to be decided. Staggered bond pattern, or similar, as approved
See 1737_PL_D_01.01 for details

P12 Own Door Access Paving - 1777 sqm
Concrete or PC concrete block with granite aggregate finish or similar, colour to be decided. Staggered bond pattern, or similar, as approved

Gravel - 366 sqm
Set bedding gravel, Baflylark, 10mm and down, or similar, as approved

Tactile Paving
Tactile Flag Pavers (Blister or Warning, depending on location), dim. 400x400x50mm, colour Red or Terrazzo, depending on location, or similar, as approved
See 1737_PL_D_01.07 for details

Kerb Cutoff
Non-slip, accessible ramp with tactile paving.
Detail to be determined by civil engineers

Kerb
Slopform Concrete Kerb, 150mm height, with expansion joint or similar, as approved
Detail to be determined by civil engineers

Flush Kerb
Flush Concrete Kerb, to allow for emergency access, pedestrian space defended with bollards
Detail to be determined by civil engineers

Main Roadway - 2400 sqm
Marshall asphalt, hot rolled with mid grey graphic chipping. Detail to be determined by civil engineers
See 1737_PL_D_01.03 for details

Residential Roadway - 1667 sqm
Marshall asphalt, hot rolled with white graphic chipping. Detail to be determined by civil engineers
See 1737_PL_D_01.03 for details

Tabbed Intersection
Detail to be determined by civil engineers

FURNITURE / ELEMENTS

Seating - 33 no. Final locations to be determined - See 1737_PL_D_01.11 for details
Length 1800mm, width 300mm, height 450mm, powder coated steel divider bar to match legs, fixed to the ground by means of anchoring bolts. 50% to have backrest and armrest, 50% without.
Hartecast HC2035, HC2038, and/or Robust Coloured pre-cast concrete bench, or similar approved

Seat Wall - 17 no. See plan for location - See 1737_PL_D_01.12 for details
Timber bench on or cantilever from raised planter/concrete wall

Bins - 7 no. Final locations to be determined - See 1737_PL_D_01.13 for details
Hartecast (HC2054) or similar, as approved, colour TDB

Bollards - 20 no. Final locations to be determined - See 1737_PL_D_01.10 for details
Hartecast (HC2063/HC2062) brushed metal retractable bollards or similar approved

Cycle Stands - 150 no. (380 spaces)
See 1737_PL_D_01.09 for details Sheffield Cycle Stands 1000mm x 1000mm or similar, as approved

Residential Cycle Stands - Own Door - 68 no. (136 spaces), General Residential - 19 no. (58 spaces)
See 1737_PL_D_01.09 for details Sheffield Cycle Stands 1000mm x 1000mm or similar, as approved

Tree Grilles - 23 no. See 1737_PL_D_02.03 for details
1000mm x 1000mm cast iron, tree grill

Standard Bus Shelter - See 1737_PL_D_15.01 for details
1940mm x 5300mm Standard Bus Shelter

MUGA (Multi Use Games Area)
Approx. 13m x 26m Multi Use Games Area with artificial turf and marking, low wood fencing with lighting incorporated to fence post, ball net and goals at short ends and entrance facing on to the central spine path

Playground Surfacing - 663 sqm - See 1737_PL_D_01.06 for details
Wetpour Safety Surface, or similar approved

Natural Play Elements
Natural Play Elements - mounding, stepping stones, balance logs, vertical logs, as agreed prior to taking to site

Structured Play Elements
Multi-age Play Elements, equipment each provide different play: balance, swing, climb, and rest. See Landscape Design Report for information and precedents.

Site Lighting
See Lighting Reports and Drawings for detail on lighting types and details.

Public Art Locations
Potential location for public art, to be agreed with DCC prior to construction

Bin Pickup Location
Potential location of bin pickup location, see architecture drawings for more information

Entrance Location
Key core entrances

Existing Levels	
Proposed Levels	

1. This drawing is intended to show landscape architectural proposals only. Plans with a green and blue background are intended to represent levels of planting, structure, walls, paving, etc.
2. The copyright of this drawing is vested with Murray & Associates. This drawing may not be reproduced, stored in a retrieval system, or transmitted in any form or by any means, electronic, mechanical, photocopying, recording, or by any information storage and retrieval system, without the prior written permission of Murray & Associates.
3. This drawing is not a contract. It is a design proposal. For more information, please contact Murray & Associates.
4. This drawing is not a contract. It is a design proposal. For more information, please contact Murray & Associates.

murray & associates
landscape architecture
14 The Seaport Building, murray & associates
48-50 Cornhill Street, www.murrayandassociates.com
Dublin 3, D02 R9P2 +353 (0) 1 854 0290

IFP.12.05/21 Issued for Stage 3 Planning_AG_UB

CLIENT
Bartha ODG Limited
PROJECT
Strategic Housing Development (SHD) at former O'Devaney, Dublin 7

SHEET TITLE
Landscape Masterplan - Hard Landscape and Feature Plan

SHEET NO.	SHEET SIZE
1737_PL_P_01.01	A0
SCALE	DATE
1:500	IFP
STAGE	DATE
Planning	12/05/21



SOFT LANDSCAPE DETAILS (Dwg. no. 1737_PL_D_02) for more information

Existing Tree to be Retained with root protection zone
See Tree Survey (Dwg. no. 1737_T2_P_01) for more information

Existing Tree to be Removed
See Arboricultural Impact Plan (Dwg. no. 1737_T2_P_02) for more information

Resin Bound Tree Pit - 336 sq.m
Permeable Resin Bound Gravel with Silva Cell, or similar approved, SuDs modular soil structure

Modular Soil Structure and Tree pit System- 837 sq.m
Indicative location of Modular Soil Structure System Silva Cell and structural soil, or similar approved. See 1737_PL_D_02.06 for details

Proposed Ground Level Trees - 215 No.

Common Name	Species Name	Specification	No.
T1	London Plane	Platanus x acerifolia	25
T2	Silver Line	Tilia Tomentosa 'Trabant'	59
T3	Upright Hornbeam	Carpinus betulus 'Fastigiata'	15
T4	Common alder	Alnus glutinosa*	42
T5	Servicberry	Amelanchier lamarckii	30
T6	Eastern Redbud	Cercis canadensis	8
T7	Paperbark Maple	Acer glabrum	19
T8	Common Hazel	Corylus avellana*	22
T9	Wild Cherry	Prunus avium*	15
T10	Birch	Betula pendula*	20

PL1 Residential Edging Buffer - 1782 sq.m.

Common Name	Species Name	Specification	Centres
Anemone	Viburnum x bodnantense	bt 60-80cm Ht.	700mm
Guelder Rose	Viburnum opulus***	bt 60-80cm Ht.	700mm
Dogwood	Cornus sanguinea**	bt 60-80cm Ht.	700mm
Ribbon Grass	Phalaris fessy	cg 2L 20-30cm Ht.	400mm
Karl F. Reed Grass	Calamagrostis 'Karl Foerster'	cg 2L 30-40cm Ht.	700mm
Miscanthus	Miscanthus sinensis 'Gracillimus'	cg 2L 30-40cm Ht.	700mm
Lonicera	Lonicera pileata	cg 2L 20-30cm Ht.	500mm

PL2 Residential Edging Buffer w/ Textured Screening - 265 sq.m.

Common Name	Species Name	Specification	Centres
Anemone	Viburnum x bodnantense 'Dawn'	bt 60-80cm Ht.	700mm
Guelder Rose	Viburnum opulus***	bt 60-80cm Ht.	700mm
Dogwood	Cornus sanguinea**	cg 2L 20-30cm Ht.	700mm
Ribbon Grass	Phalaris fessy	cg 2L 20-30cm Ht.	400mm
Karl F. Reed Grass	Calamagrostis 'Karl Foerster'	cg 2L 30-40cm Ht.	700mm
Miscanthus	Miscanthus sinensis 'Gracillimus'	cg 2L 30-40cm Ht.	700mm
Lonicera	Lonicera pileata	cg 2L 20-30cm Ht.	500mm
Spring heliopsis	Heliopsis scabra**	cg 2L 30-40cm Ht.	300mm
Dogwood	Cornus alba***	cg 2L 30-40cm Ht.	500mm
Bell heather	Erica cinerea***	cg 2L 30-40cm Ht.	500mm
Alum Root	Huechera 'Palace Purple'	cg 2L 20-30cm Ht.	300mm
Magnolia	Atkinsonia vulgaris*	cg 2L 30-40cm Ht.	400mm
Lady Fern	Athyrium filix-femina*	cg 2L 30-40cm Ht.	500mm
Curry plant	Helichrysum italicum	cg 2L 30-40cm Ht.	400mm

PL3 Groundcover Planting - 1620 sq.m.

Common Name	Species Name	Specification	Centres
Elder	Sambucus nigra*	bt 60-80cm Ht.	700mm
Rosemary	Rosmarinus officinalis 'Roseus'	cg 2L 30-40cm Ht.	500mm
Black-leaved Holly	Ilex crenata 'Heller'	bt 60-80cm Ht.	700mm
Platanus Purple	Huechera alba	cg 2L 30-40cm Ht.	400mm
Peppermint	Mentha x piperita*	cg 2L 20-30cm Ht.	300mm
Lamb's Ear	Stachys byzantina**	cg 2L 20-30cm Ht.	400mm
Wormwood	Artemisia 'Provis Castle'	cg 2L 30-40cm Ht.	400mm
Lady Fern	Athyrium filix-femina*	cg 2L 30-40cm Ht.	500mm
Curry plant	Helichrysum italicum	cg 2L 30-40cm Ht.	400mm
Hedge veronica	Hebe x transsciana*	cg 2L 30-40cm Ht.	400mm

PL4 Housing Edging Buffer - 316 sq.m.

Common Name	Species Name	Specification	Centres
Asiatic Japanese Hybrid	Asiatic 'Reinhard'	cg 2L 20-30cm Ht.	300mm
St John's wort 'Hidcot'	Hypericum 'Hidcot'	cg 2L 30-40cm Ht.	600mm
David's eldorado	Viburnum davidii	cg 2L 30-40cm Ht.	400mm
English Lavender	Lavandula 'Hidcot'	cg 2L 30-40cm Ht.	400mm
Dwarf Sweet Box	Sarcococca humilis**	cg 2L 30-40cm Ht.	400mm
Japanese temple	Carex oshimensis 'Evergold'	cg 2L 30-40cm Ht.	400mm
Rosemary	Rosmarinus officinalis 'Roseus'	cg 2L 30-40cm Ht.	500mm
Lonicera	Lonicera pileata	cg 2L 20-30cm Ht.	500mm

PL5 Residential Street Planting Bays - 115 sq.m.

Common Name	Species Name	Specification	Centres
Dogwood	Cornus sanguinea**	cg 2L 60-80cm Ht.	600mm
Alum Root	Dryas octopetala	cg 2L 30-40cm Ht.	300mm
Gold-Edged Plantain Lily	Hosta fortunei var. aureomarginata	cg 2L 20-30cm Ht.	300mm
St John's wort	Hypericum perforatum**	cg 2L 40-60cm Ht.	300mm
French Lavender	Lavandula pedunculata	cg 2L 20-30cm Ht.	400mm
Snowy Merald	Libertia romosa*	cg 2L 30-40cm Ht.	400mm
Chinese fountain grass	Pennisetum alopecuroides	cg 2L 40-60cm Ht.	400mm

PL6 Structural Edging Planting - 643 sq.m.

Common Name	Species Name	Specification	Centres
Japanese spindle	Euconymus japonicus	cg 2L 30-40cm Ht.	300mm
Holly	Ilex aquifolium*	cg 2L 20-40cm Ht.	300mm
Green Privet	Ligustrum Ovalatum**	cg 2L 40-60cm Ht.	300mm

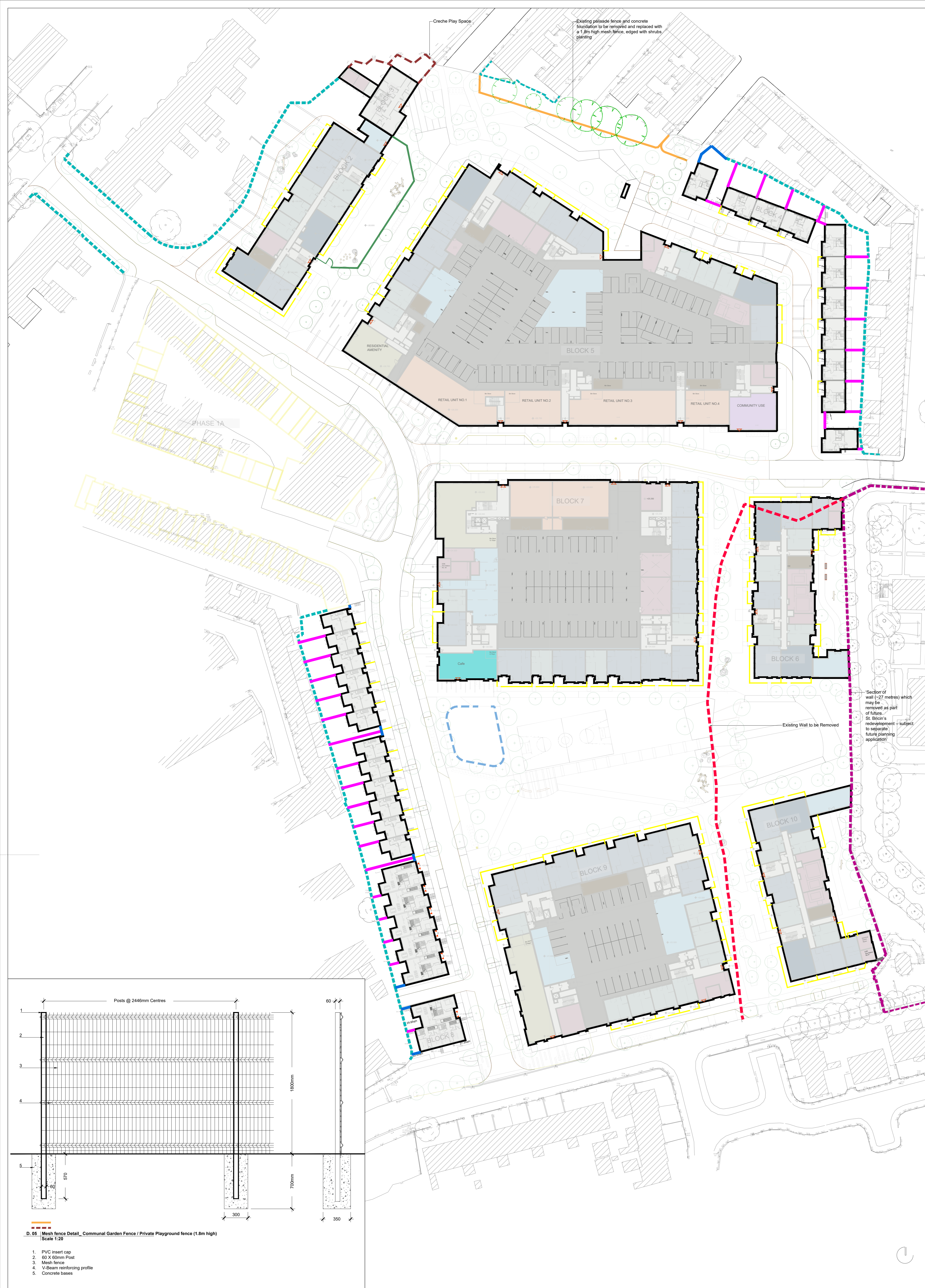
PL7 Community Garden/Allotment Area Planting - 678 sq.m.
Area to be provided for community garden and/or allotments, area to be temporary planted with ornamental and perennial.

G1 Amenity Grass - 150mm min. Topsoil depth - 4540 sq.m
Coburn's Low Maintenance seed

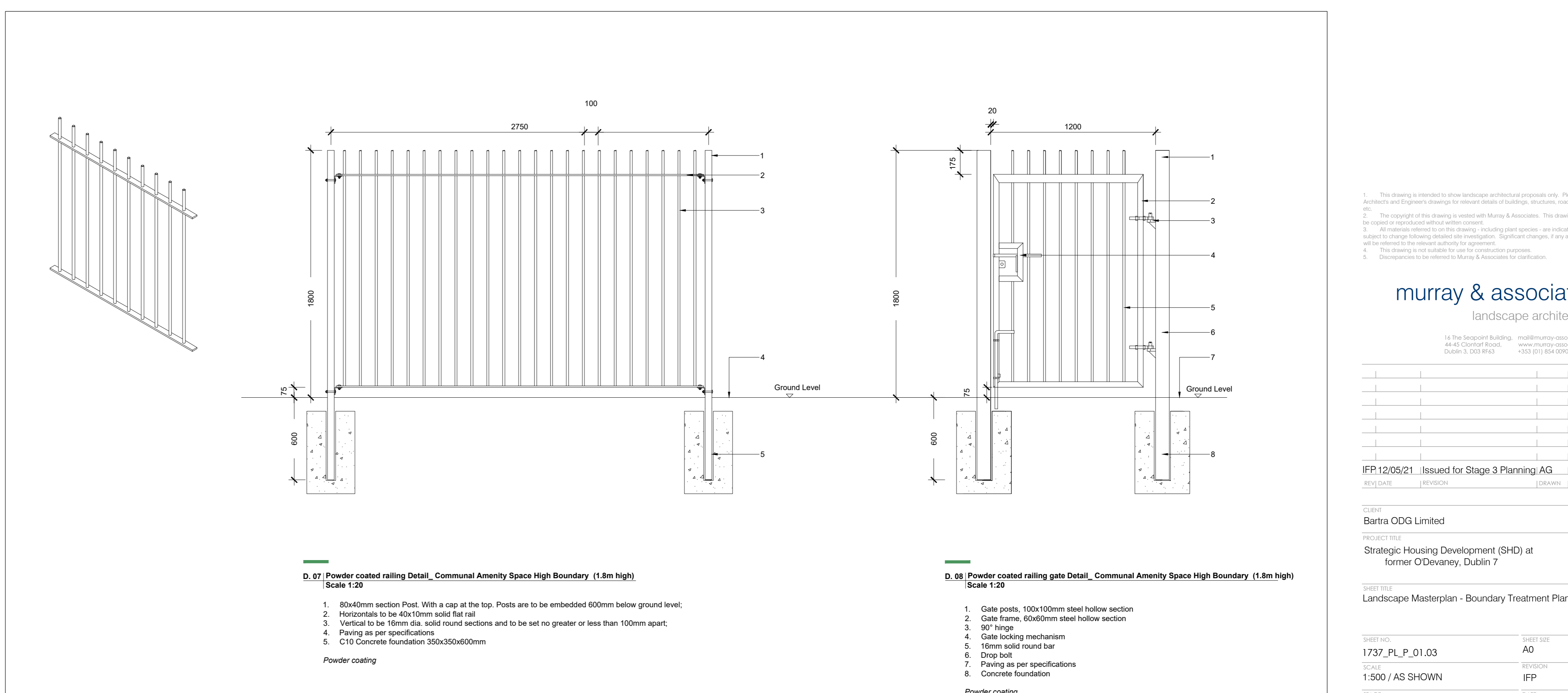
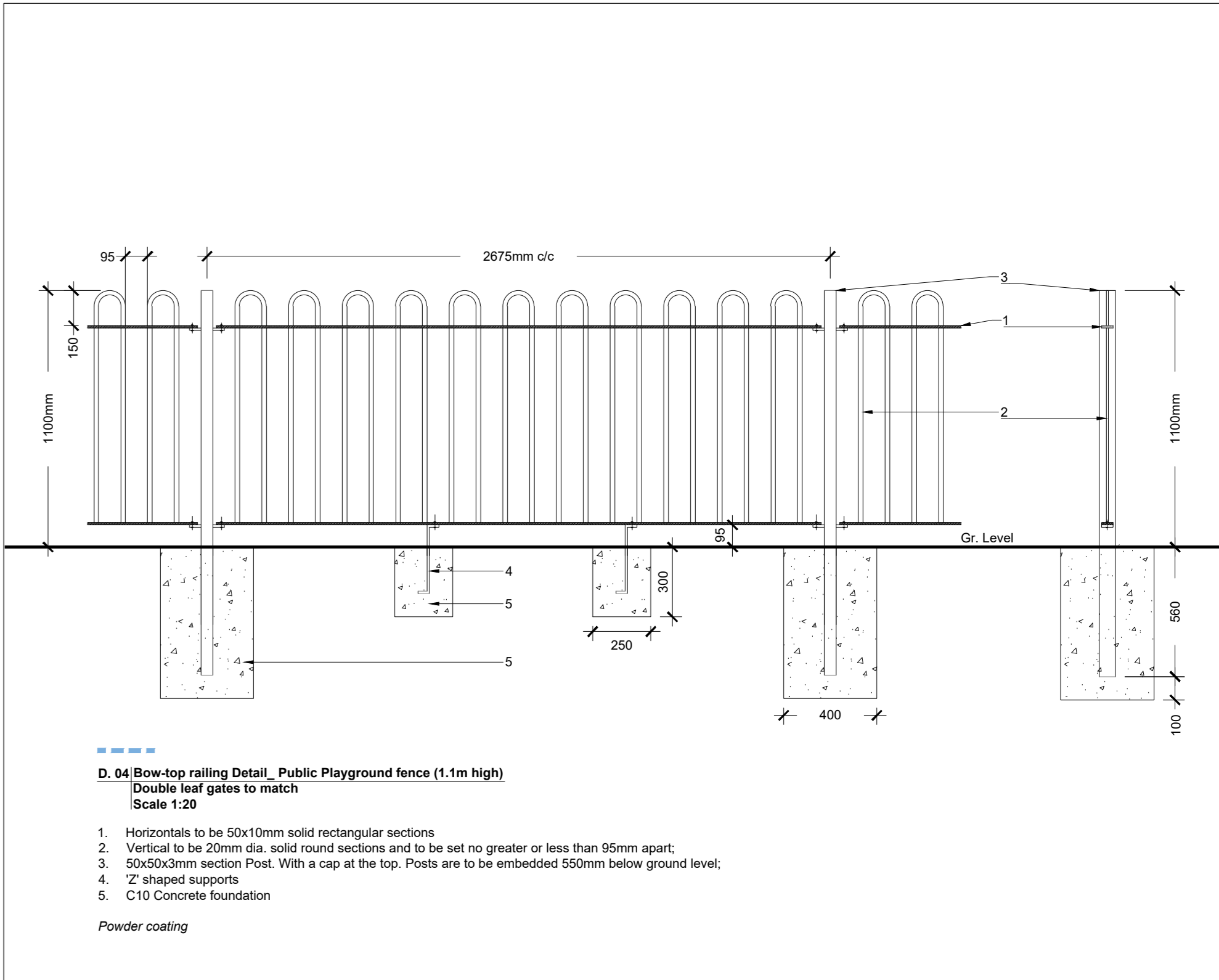
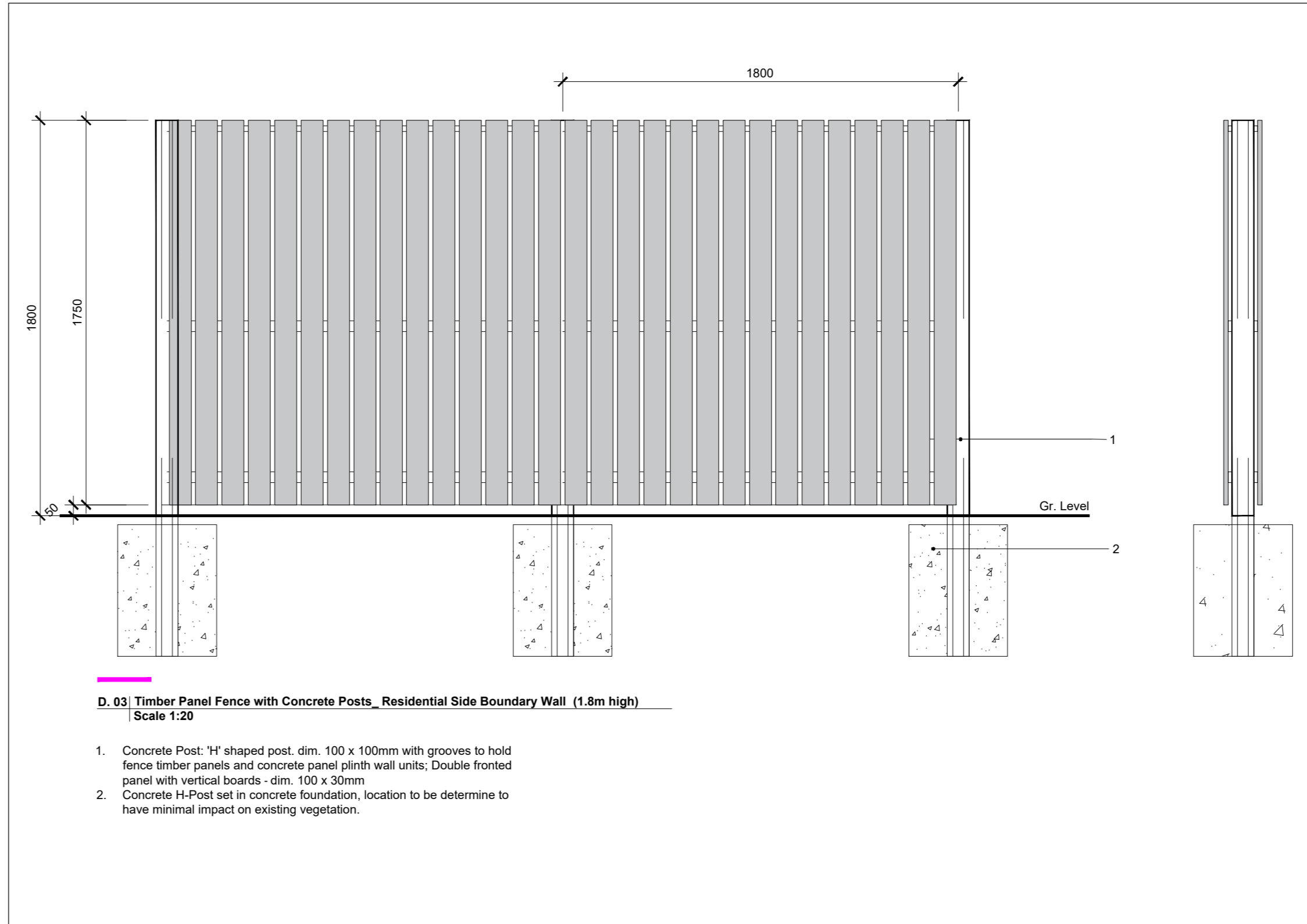
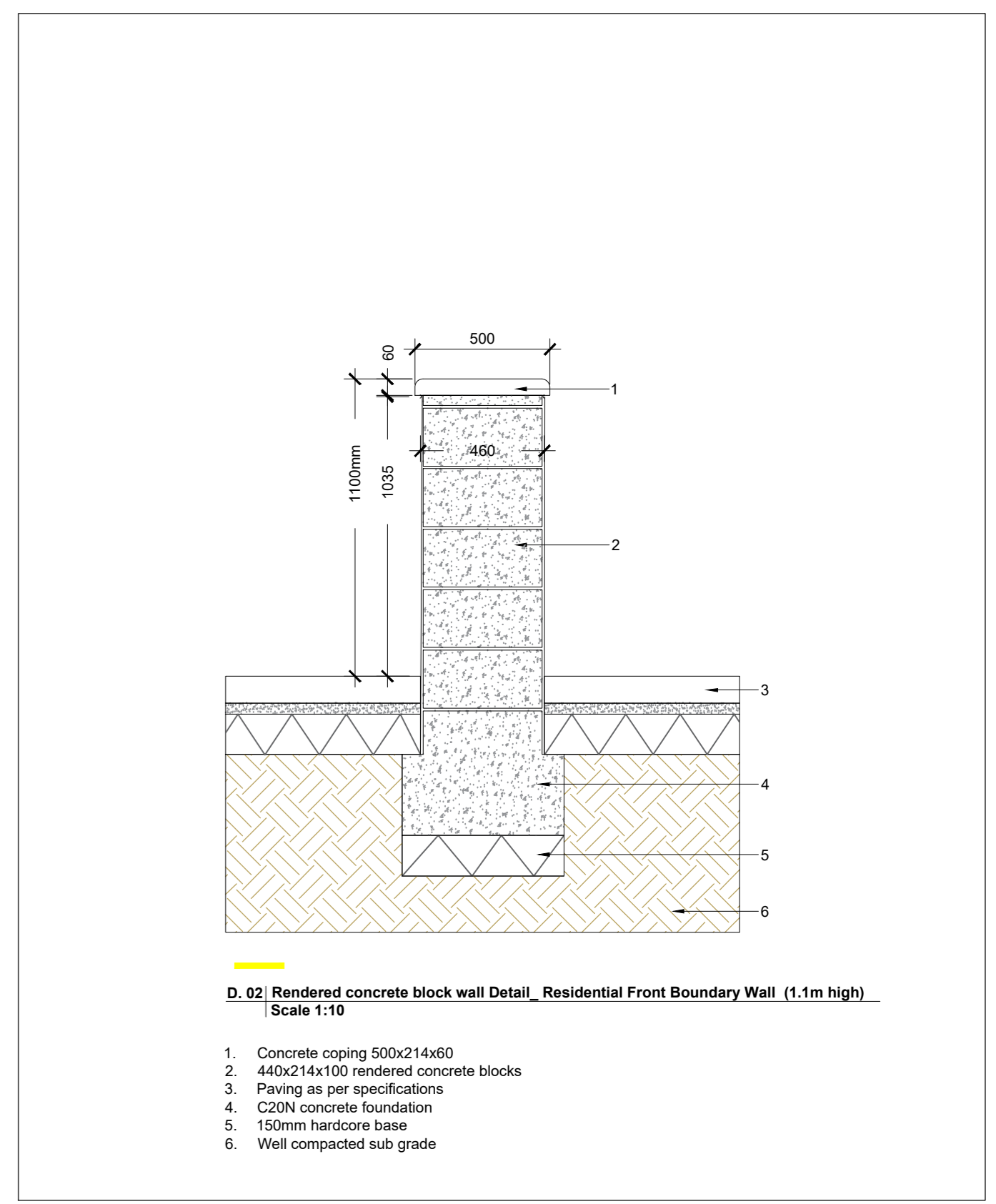
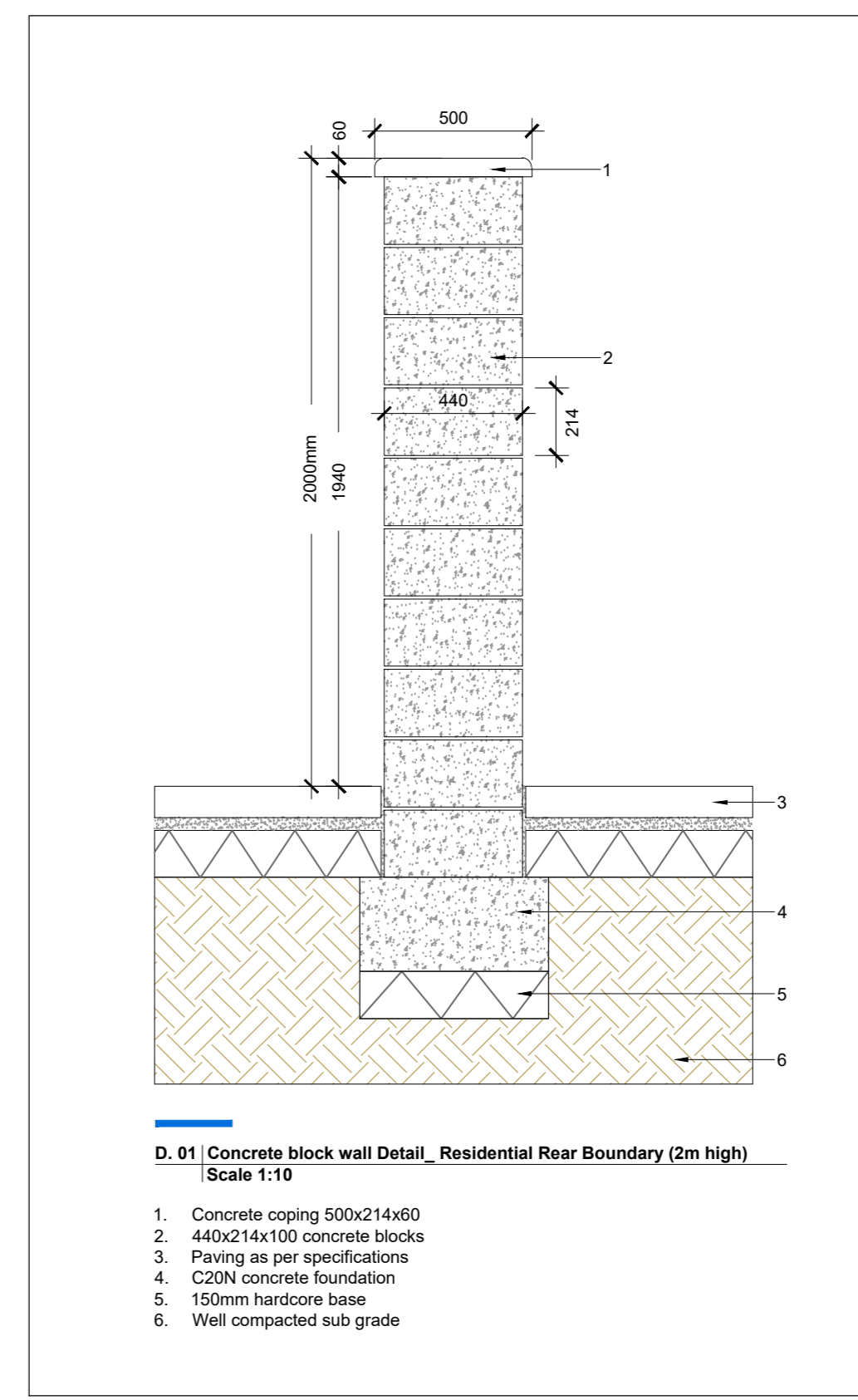
G2 Mounded Amenity Grass - 150mm min. Topsoil depth - 488 sq.m
Coburn's Low Maintenance seed, Grass Mound - max 1.5m height

G3 Reinforced Grass - 150mm min. Topsoil depth - 381 sq.m
Coburn's Low Maintenance seed lawn on a structural system to allow for emergency vehicular access

* Species Native to Ireland
** Plants for Pollinators
These plants will provide nectar and pollen for bees and the many other types of pollinating insects



- SOFT LANDSCAPE**
See Soft Landscape Details (Dwg no. 1737_PL_D_02) for more information
- Existing Tree to be Retained with root protection zone**
See Tree Survey (Dwg. no. 1737_TS_P_01) for more information
- BOUNDARY TREATMENTS**
- Existing wall to be removed
 - Existing Boundary Treatment to be retained: General
Concrete block wall (typically 2-3m) to be retained and rendered on internal face (site face)
 - Existing Boundary Treatment to be retained: St Bricks Boundary - 168 Im.
Proposed adjacent boundary not to be attached to existing wall. Sections of St Bricks wall to be retained prior to any future development within St Bricks red part of this application.
 - Boundary Wall to match adjacent building facade - 2m.
2m concrete wall rendered to match adjacent building integrated into building, see architecture plans for details
 - Residential Rear Rendered Block Boundary Wall (2m high) - 31 Im.
Concrete block wall with concrete coping
See 1737_PL_P_01.03.03 for details
 - Residential Front Boundary (1.2m high) - 870 Im.
1200mm powder coated railing, with entrance gates where indicated
See 1737_PL_P_01.03.02 for details
 - Residential Side Wall (1.8m high) - 195 Im.
Timber Fencing with concrete posts
See 1737_PL_P_01.03.03 for details
 - Communal Garden fence: existing fence to be replaced - 81m
1800mm mesh fence proposed
See 1737_PL_P_01.03.05 for details
 - Communal Amenity Space High Boundary - 63 Im.
1800mm powder coated railing, with controlled entrance
See 1737_PL_P_01.03.07 for details
 - Public Playground fence - 60m.
1100mm high bow-top railing to sides with powder coating, double leaf gates
See 1737_PL_P_01.03.04 for details
 - Private Playground fence - 43 Im.
1800mm mesh fence
See 1737_PL_P_01.03.05 for details





LEGEND LANDSCAPE SPACES		Public Realm	
—	PUBLIC REALM/OPEN SPACE	Total Site	52287 sqm
—	COMMUNAL AMENITY AREA	SDRA 11: 15% of Total Site to be Open Green Space (SQM)	7843
		Central Park	5500
		Northern areas	2260
		Urban open space	487
		Total Provided Open Space (SQM)	8247
		Percentage of the site	16%

Communal Amenity Area			
BLOCK 2			BLOCK 4
	Annex 1 Standard (sqm)	No. of Units	Communal Amenity Space Requirement
One bedrooms	5	44	220
Two bedrooms	7	23	161
Three bedrooms	9	7	63
		Total Units	74
Minimum communal amenity space required			444
Provided communal amenity area (SQM)			
Ground Level	480		
Total Provided communal amenity area (SQM)			480
		Percent above requirements	8%

BLOCK 5				BLOCK 6			
	Annex 1 Standard (sqm)	No. of Units	Communal Amenity Space Requirement		Annex 1 Standard (sqm)	No. of Units	Communal Amenity Space Requirement
One bedrooms	5	71	355	One bedrooms	5	24	120
Two bedrooms	7	143	1001	Two bedrooms	7	55	385
Three bedrooms	9	80	720	Three bedrooms	9	14	126
		Total Units	294			Total Units	93
Minimum communal amenity space required			2076	Minimum communal amenity space required			631
Provided communal amenity area (SQM)				Provided communal amenity area (SQM)			
Courtyard	1328			Ground Level	356		
Roof Terrace	918			Roof Terrace	430		
Total Provided communal amenity area (SQM)			2246	Total Provided communal amenity area (SQM)			786
		Percent above requirements	8%			Percent above requirements	25%

BLOCK 7			
	Annex 1 Standard (sqm)	No. of Units	Communal Amenity Space Requirement
One bedrooms	5	87	435
Two bedrooms	7	161	1127
Three bedrooms	9	16	144
		Total Units	264
Minimum communal amenity space required			1706
Provided communal amenity area (SQM)			
Courtyard	730		
Roof Terrace	1467		
Total Provided communal amenity area (SQM)			2197
		Percent above requirements	29%

BLOCK 8a, 8b, 8c & 8d			
	DCC Development Standards (16.10.2) (5qm per bed space)	No. of Units (5 bed per unit)	Private Open Space required per Unit
		8	12
Provided private open space (SQM)			
Average Rear Garden Size	63	Percent above	58%
	Annex 1 Standard (sqm)	No. of Units	Communal Amenity Space Requirement
Duplex (2bed)	7	6	42
Duplex (3bed)	9	8	72
Minimum communal amenity space required			114
Total Provided communal amenity area (SQM)			
Duplex Lower Gardens: 226 sqm total		Adjacent Open Space (south of block, pocket park 200 sqm.)	

** Block 8c&d: the ground floor units have been provided with a larger private and communal open space to the rear of the block, in the way of garden which is in excess of the Guidelines standard. The 6 upper level units do not have specific designated communal amenity space which is justified in the context of the overall quantum of landscaped public open space on the site and the location of the units overlooking the central park and area adjacent to the small pocket park space at the Montpellier Gardens entrance.

BLOCK 10			
	Annex 1 Standard (sqm)	No. of Units	Communal Amenity Space Requirement
One bedrooms	5	24	120
Two bedrooms	7	55	385
Three bedrooms	9	14	126
		Total Units	93
Minimum communal amenity space required			631
Provided communal amenity area (SQM)			
Ground Level	402		
Roof Terrace	430		
Total Provided communal amenity area (SQM)			832
		Percent above requirements	32%

murray & associates
landscape architecture

14 The Leinster Building, Dublin 1
44-46 Courthouse Lane, Dublin 3, D02 R927
t: +353 (0)1 454 2000
e: info@murrayandassociates.com
www.murrayandassociates.com

IFP 12/05/21 Issued for Stage 3 Planning AG - JB

Bartra ODG Limited
Strategic Housing Development (SHD) at former O'Devaney, Dublin 7

1737_PL_P_01.04
1:500
Planning
12/05/21



'Section of wall (c27 metres) which may be removed as part of future St. Brin's redevelopment - subject to separate future planning application'

SOFT LANDSCAPE
See Soft Landscape Plan (Dwg. no. 1737_PL_P_01.02) for more information

Existing Tree to be Retained

- Resin Bound Tree Pit - 336 sq.m
- Modular Soil Structure and Tree Pit System - 837 sq.m

Proposed Trees - 260 No.

No.	Common Name	Species Name	Specification	No.
T1	London Plane	<i>Platanus x acerifolia</i>	rb 35-40cm gt.	25
T2	Silver Lime	<i>Tilia Tomentosa 'Brabant'</i>	rb 20-25 cm gt.	59
T3	Upright Hornbeam	<i>Carpinus betulus 'Fastigiata'</i>	rb 20-25 cm gt.	15
T4	Common alder	<i>Alnus glutinosa*</i>	rb 20-25 cm gt.	42
T5	Serviceberry	<i>Amelanchier lamarckii</i>	rb 18-20cm gt.	30
T6	Eastern Redbud	<i>Cercis canadensis</i>	rb 18-20cm gt.	8
T7	Paperbark Maple	<i>Acer griseum</i>	rb 18-20cm gt.	19
T8	Common Hazel	<i>Corylus avellana*</i>	rb 18-20cm gt.	22
T9	Wild Cherry	<i>Prunus avium*</i>	rb 18-20cm gt.	15
T10	Birch	<i>Betula pendula*</i>	rb 18-20cm gt.	20

	Residential Edging Buffer - 1782 sq.m
	Residential Edging Buffer w/ Textured Screening - 265 sq.m
	Groundcover Planting - 1620 sq.m
	Housing Edging Buffer - 316 sq.m
	Residential Street Planting Bays - 155 sq.m
	Structured Edging Planting - 643 sq.m
	Community Garden/Allotment Area Planting - 678 sq.m
	Amenity Grass - 150mm min. Topsoil depth - 4540 sq.m Coburn's Low Maintenance seed
	Mounded Amenity Grass - 150mm min. Topsoil depth - 488 sq.m Coburn's Low Maintenance seed
	Reinforced Grass - 150mm min. Topsoil depth - 381 sq.m Coburn's Low Maintenance seed

HARD LANDSCAPE
See Hard Landscape Plan (Dwg. no. 1737_PL_P_01.01) for more information

	Concrete Footpaths - 2725 sq.m
	Park/High Pedestrian Traffic Surfacing - 1694 sq.m
	Feature Paving (Entrance and Seating Areas) - 411 sq.m
	Phase 1/Streetscape Intergration Paving - 1267 sq.m
	Permeable Surface for On-Street Parking - 1195 sq.m
	Shared/Vehicular Parking Entrance Surfacing - 67 sq.m
	Main Street Shared Paving - 1791 sq.m
	Northern Park Paving - 645 sq.m
	Pedestrian Park Avenue Paving - 347 sq.m
	Pedestrian Feature Paving - 762 sq.m
	Pedestrian Paving Trim - 313 sq.m
	Own Door Access Paving - 1777 sq.m
	Gravel - 366 sq.m
	Tactile Paving

	Kerb Cutout
	Kerb
	Flush Kerb
	Main Roadway - 2400 sq.m
	Residential Roadway - 1567 sq.m
	Tabled Intersection

FURNITURE / ELEMENTS
See Hard Landscape and Feature Plan (Dwg. no. 1737_PL_P_01.01) for more information

	Benches/Seatwall - 50 no. Final locations to be determined
	Bins - 7 no. Final locations to be determined
	Bollards - 20 no. Final locations to be determined
	Visitor Cycle Stands - 190 no (380 spaces)
	Residential Cycle Stands Own Door: 68 no (136 spaces), General Residential: 19 no (58 spaces)
	Tree Grills - 22 no.
	Standard Bus Shelter
	MUGA (Multi Use Game Areas)
	Playground Surfacing - 663 sq.m

	Found Play Elements
	Structured Play Elements
	Site Lighting
	Public Art Locations
	Bin Pick-up Locations
	Entrance Location

BOUNDARY TREATMENTS

	Existing Boundary Treatment to be retained: General
	Existing Boundary Treatment to be retained: St Brin's Boundary - 168 lm.
	Boundary Wall to match adjacent building facade - 2 lm.
	Residential Rear Rendered Block Boundary Wall (2m high) - 31 lm.
	Residential Front Boundary (1.2m high) - 870 lm.
	Residential Side Wall (1.8m high) - 195 lm.
	Communal Garden fence: Existing fence to be replaced - 81m.
	Communal Amenity Space High Boundary - 63 lm.
	Public Playground fence - 60 lm.
	Private Playground fence - 43 lm

1. This drawing is intended to show landscape architectural proposals only. Please refer to Architects and Engineers drawings for relevant details of buildings, structures, roads, parking, etc.
2. All materials related to this drawing, including plant species, are indicative and subject to change following detailed site investigation. Significant changes, if any are required, will be referred to the relevant authority for agreement.
3. This drawing is not suitable for use for construction purposes.
4. Discrepancies to be referred to Murray & Associates for clarification.

murray & associates
landscape architecture

14 The Seapoint Building, 14-15, Canal Road, Dublin 3, D03 R9F3
m@murrayassociates.com
www.murrayassociates.com
+353 (0)1 854 0290

IFP 12/05/21 Issued for Stage 3 Planning AG JB
REV DATE REVISION DRAWN CHECKED

CLIENT
Bartra ODG Limited
PROJECT TITLE
Strategic Housing Development (SHD) at former O'Devaney, Dublin 7
SHEET TITLE
Landscape Masterplan - Central Park

SHEET NO.
1737_PL_P_01.05
SCALE
1:200
STAGE
Planning
SHEET SIZE
A1
REVISION
IFP
DATE
12/05/21



SOFT LANDSCAPE
See Soft Landscape Plan (Dwg. no. 1737_PL_P_01.02) for more information

Existing Tree to be Retained

- Resin Bound Tree Pit - 336 sq.m
- Modular Soil Structure and Tree Pit System - 837 sq.m

Proposed Trees - 260 No.	Common Name	Species Name	Specification	No.
T1	London Plane	Platanus x acerifolia	rb 35-40cm gt.	25
T2	Silver Lime	Tilia tomentosa 'Barbarr'	rb 20-25 cm gt.	59
T3	Upright Hornbeam	Carpinus betulus 'Fastigata'	rb 20-25 cm gt.	15
T4	Common alder	Alnus glutinosa*	rb 20-25 cm gt.	42
T5	Servicberry	Amelanchier lamarckii	rb 18-20cm gt.	30
T6	Eastern Redbud	Cercis canadensis	rb 18-20cm gt.	6
T7	Paperbark Maple	Acer griseum	rb 18-20cm gt.	19
T8	Common Hazel	Corylus avellana*	rb 18-20cm gt.	22
T9	Wild Cherry	Prunus avium*	rb 18-20cm gt.	15
T10	Birch	Betula pendula*	rb 18-20cm gt.	20

- Residential Edging Buffer - 1782 sq.m
- Residential Edging Buffer w/ Textured Screening - 285 sq.m
- Groundcover Planting - 1620 sq.m
- Housing Edging Buffer - 316 sq.m
- Residential Street Planting Bays - 155 sq.m
- Structured Edging Planting - 643 sq.m
- Community Garden/Allotment Area Planting - 678 sq.m
- Amenity Grass - 150mm min. Topsoil depth - 4540 sq.m
Coburn's Low Maintenance seed
- Mounded Amenity Grass - 150mm min. Topsoil depth - 488 sq.m
Coburn's Low Maintenance seed
- Reinforced Grass - 150mm min. Topsoil depth - 381 sq.m
Coburn's Low Maintenance seed.

HARD LANDSCAPE
See Hard Landscape Plan (Dwg. no. 1737_PL_P_01.01) for more information

- Concrete Footpaths - 2725 sq.m
- ParkHigh Pedestrian Traffic Surfacing - 1694 sq.m
- Feature Paving (Entrance and Seating Areas) - 411 sq.m
- Phase 1/Streetcape Integration Paving - 1287 sq.m
- Permeable Surface for On-Street Parking - 1185 sq.m
- Shared/Vehicular Parking Entrance Surfacing - 67 sq.m
- Main Street Shared Paving - 1791 sq.m
- Northern Park Paving - 645 sq.m
- Pedestrian Park Avenue Paving - 347 sq.m
- Pedestrian Feature Paving - 762 sq.m
- Pedestrian Paving Trim - 313 sq.m
- Own Door Access Paving - 1777 sq.m
- Gravel - 366 sq.m
- Tactile Paving
- Kerb Cutout
- Kerb
- Flush Kerb
- Main Roadway - 2400 sq.m
- Residential Roadway - 1567 sq.m
- Tabbed Intersection

FURNITURE / ELEMENTS
See Hard Landscape and Feature Plan (Dwg. no. 1737_PL_P_01.01) for more information

- Benches/Seawall - 50 no. Final locations to be determined
- Bins - 7 no. Final locations to be determined
- Bollards - 20 no. Final locations to be determined
- Visitor Cycle Stands - 190 no (380 spaces)
- Residential Cycle Stands
Own Door (8 no (136 spaces), General Residential: 19 no (58 spaces).
- Tree Grills - 22 no.
- Standard Bus Shelter
- MUGA (Multi Use Game Area)
- Playground Surfacing - 663 sq.m
- Found Play Elements
- Structured Play Elements
- Site Lighting
- Public Art Locations
- Bin Pick-up Locations
- Entrance Location

BOUNDARY TREATMENTS

- Existing Boundary Treatment to be retained: General
- Existing Boundary Treatment to be retained: St Brigid's Boundary - 168 m.
- Boundary Wall to match adjacent building facade - 2 m.
- Residential Rear Rendered Block Boundary Wall (2m high) - 31 m.
- Residential Front Boundary (1.2m high) - 870 m.
- Residential Side Wall (1.8m high) - 195 m.
- Communal Garden fence: Existing fence to be replaced - 61m.
- Communal Amenity Space High Boundary - 63 m.
- Public Playground fence - 60 m.
- Private Playground fence - 43 m



SOFT LANDSCAPE

Proposed Trees

Common Name	Species Name	Specification	No.
T1	Eastern Redbud <i>Cercis Canadensis</i>	rb 18 cm gt.	11
T2	Paperbark Maple <i>Acer griseum</i>	rb 18 cm gt.	3
T3	Flowering Cherry <i>Prunus avium</i>	rb 18 cm gt.	16

PC1 Courtyard Residential Edge Shrub Planting - 1420 sq.m
Low-maintenance planting with year-round interest on 450mm topsoil

Common Name	Species Name
Portugal laurel	<i>Prunus lusitanica</i>
Common box	<i>Buxus sempervirens</i>
Oregon grape	<i>Mahonia aquifolium</i>
Winged spindle	<i>Euonymus alatus</i>
Laurustinus	<i>Viburnum tinus</i>
St John's wort 'Hidcote'	<i>Hypericum hidcote</i>
Sweet box	<i>Sarcococca confusa</i>

PC2 Internal Courtyard Shrub Planting - 522 sq.m
Low-maintenance planting with year-round interest on 450mm topsoil

Common Name	Species Name
Japanese sedge 'Evergold'	<i>Carex oshimensis 'Evergold'</i>
St John's wort 'Hidcote'	<i>Hypericum 'Hidcote'</i>
Rosemary	<i>Rosmarinus officinalis</i>
Box-leaved honeysuckle	<i>Lonicera pileata</i>
Lesser periwinkle	<i>Vinca minor</i>
Oriental fountain grass 'Karley Rose'	<i>Pennisetum 'Karley Rose'</i>
English lavender 'Hidcote'	<i>Lavandula 'Hidcote'</i>
Sweet box	<i>Sarcococca confusa</i>
Great wood-rush	<i>Luzula sylvatica</i>
Balkan clary 'Ostfriesland'	<i>Salvia nemorosa 'Ostfriesland'</i>
Guelder rose	<i>Viburnum opulus</i>

G1 Reinforced Amenity Grass - 150mm min. Topsoil depth - 291 sq.m
Play safe Reinforced Turf, Coburn's Low Maintenance seed

HARD LANDSCAPE

P1 Composite Decking - 111 sq.m
Non-slip composite decking on pedestal, with drainage underneath and/or similar approved

P2 Courtyard Paving - 961 sq.m
Non-slip brushed concrete pathways, and/or similar approved

P3 Compacted Gravel - 158 sq.m
Angular Chip, 20mm Quartz Gravel, and/or similar approved

P4 Play Surface - 335 sq.m
Wetpour, Safety Surface, Colour TBD.

ELEMENT LANDSCAPE

Free Standing Bench - 13 no.
OMOS s22 Bench or similar, as approved. Length 1800mm, width 450mm, height 450mm, composite timber topped, powder coated steel divider bar, fixed to the ground by means of anchoring bolts.

Edge/Seatwall Bench - 40 lin.m
width 450mm, height 450mm cantilvered composite bench, to placed along raised planters. Omos s21 planter cantilvered seat, and/or similar approved

Built-in Raised Planters
100-400mm raised metal planters. Omos s21 planter, and/or similar approved

Playful Elements
Undulating Wetpour Surface, balancing logs, stepping pods play elements.

Proposed Vents
Podium Vent for basement. Flush with pathways, and set within planting, see architectural drawings for more information.

Building Entrance
Location of main entrance



Landscape Plan - Courtyard Key Plan (1:2000)

- This drawing is intended to show landscape architectural proposals only. Please refer to Architects and Engineers drawings for relevant details of buildings, structures, roads, parking, etc.
- The copyright of this drawing is vested with Murray & Associates. This drawing may not be copied or reproduced without written consent.
- All materials referred to on this drawing, including plant species, are indicative and subject to change following detailed site investigation. Significant changes, if any are required, will be referred to the relevant authority for agreement.
- This drawing is not suitable for use for construction purposes.
- Discrepancies to be referred to Murray & Associates for clarification.

murray & associates
landscape architecture

14 The Seapoint Building, mail@murrayassociates.com
24-25 Convent Road, www.murrayassociates.com
Dublin 3, D03 R663, +353 (0)1 854 0990

IFP 12/05/21	Issued for Stage 3 Planning, AG	JB
REV DATE	REVISION	DRAWN CHECKED

CLIENT
Bartra ODG Limited

PROJECT TITLE
Strategic Housing Development (SHD) at former O'Devaney, Dublin 7

SHEET TITLE
Landscape Plan - Courtyard Block 5

SHEET NO. 1737_PL_P_02.1	SHEET SIZE A1
SCALE 1:250	REVISION IFP
STAGE Planning	DATE 12/05/21

SOFT LANDSCAPE

Proposed Trees	Common Name	Species Name	Specification	No.
T1	Eastern Redbud	<i>Cercis canadensis</i>	r/b 18 cm gt.	11
T2	Paperbark Maple	<i>Acer griseum</i>	r/b 18 cm gt.	3
T3	Flowering Cherry	<i>Prunus avium</i>	r/b 18 cm gt.	16

PC1 Courtyard Residential Edge Shrub Planting - 1420 sq.m
Low-maintenance planting with year-round interest on 450mm topsoil

Common Name	Species Name
Portugal laurel	<i>Prunus lusitana</i>
Common box	<i>Buxus sempervirens</i>
Oregon grape	<i>Mahonia aquifolium</i>
Winged spindle	<i>Euonymus alatus</i>
Laurusinus	<i>Viburnum tinus</i>
St. John's wort 'Hidcote'	<i>Hypericum hidcote</i>
Sweet box	<i>Sarcococca confusa</i>

PC2 Internal Courtyard Shrub Planting - 522 sq.m
Low-maintenance planting with year-round interest on 450mm topsoil

Common Name	Species Name
Japanese sedge 'Evergold'	<i>Carex oshimensis 'Evergold'</i>
St John's wort 'Hidcote'	<i>Hypericum 'Hidcote'</i>
Rosemary	<i>Rosmarinus officinalis</i>
Box-leaved honeysuckle	<i>Lonicera pileata</i>
Lesser periwinkle	<i>Vinca minor</i>
Oriental fountain grass 'Karlsey Rose'	<i>Pennisetum 'Karlsey Rose'</i>
English lavender 'Hidcote'	<i>Lavandula 'Hidcote'</i>
Sweet box	<i>Sarcococca confusa</i>
Great wood-rush	<i>Luzula sylvatica</i>
Balkan clary 'Ostfriesland'	<i>Salvia nemorosa 'Ostfriesland'</i>
Gaulther rose	<i>Viburnum opulus</i>

G1 Reinforced Amenity Grass - 150mm min. Topsoil depth - 291 sq.m
Play safe Reinforced Turf, Coburn's Low Maintenance seed

HARD LANDSCAPE

P1 Composite Decking - 111 sq.m
Non-slip composite decking on pedestal, with drainage underneath and/or similar approved

P2 Courtyard Paving - 961 sq.m
Non-slip brushed concrete pathways, and/or similar approved

P3 Compacted Gravel - 158 sq.m
Angular Chip, 20mm Quartz Gravel, and/or similar approved

P4 Play Surface - 335 sq.m
Wetpour, Safety Surface, Colour TBD.

ELEMENT LANDSCAPE

Free Standing Bench - 13 no.
OMCOS s22 Bench or similar, as approved. Length 1800mm, width 450mm, height 450mm, composite timber topped, powder coated steel divider bar, fixed to the ground by means of anchoring bolts.

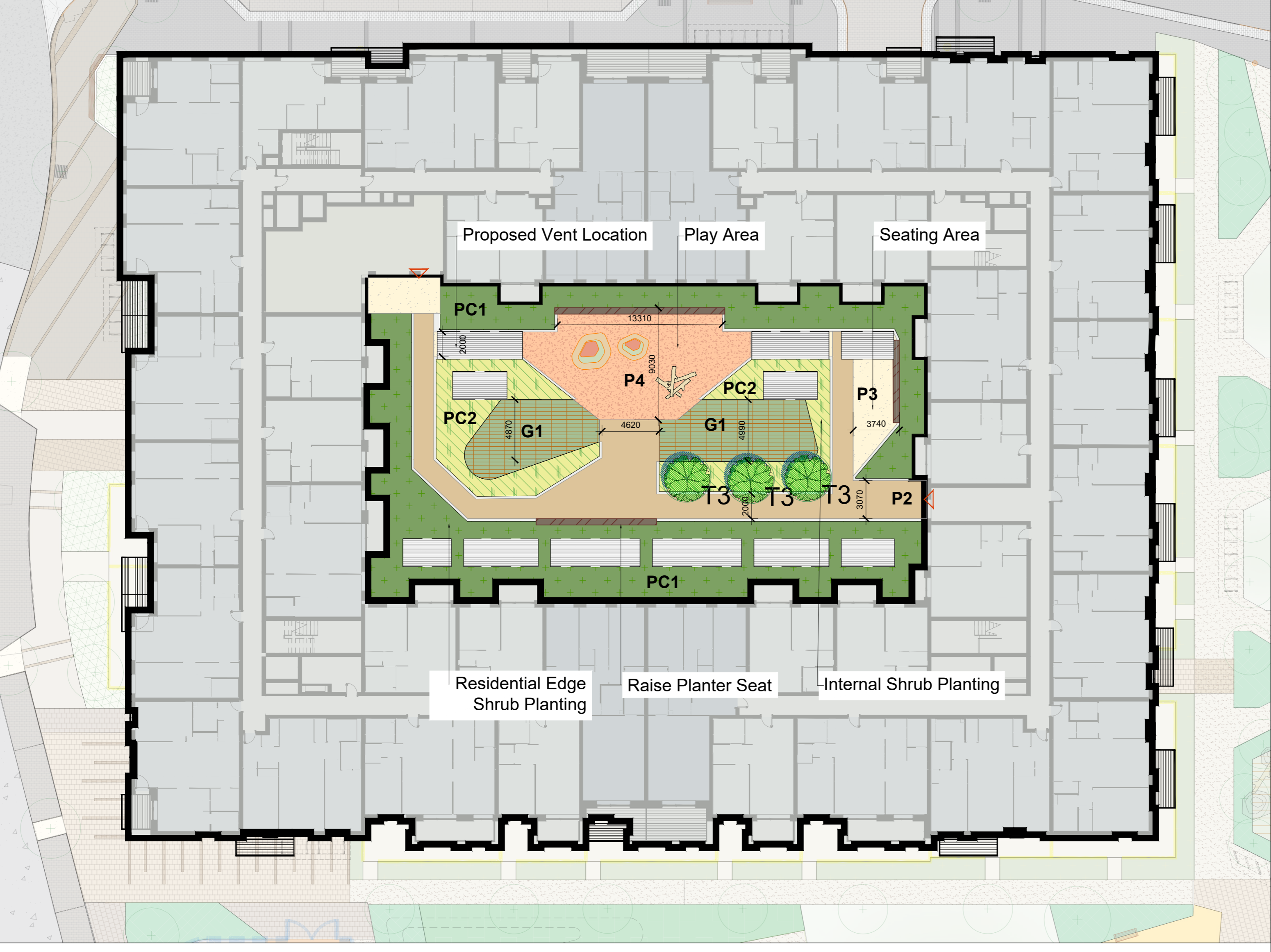
Edge/Seatwall Bench - 40 lin.m
width 450mm, height 450mm cantilevered composite bench, to be placed along raised planters. Omcos s21 planter cantilevers seat, and/or similar approved

Built-in Raised Planters
100-400mm raised metal planters. Omcos s21 planter, and/or similar approved

Playful Elements
Undulating Wetpour Surface, balancing logs, stepping pods play elements.

Proposed Vents
Podium Vent for basement. Flush with pathways, and set within planting, see architectural drawings for more information.

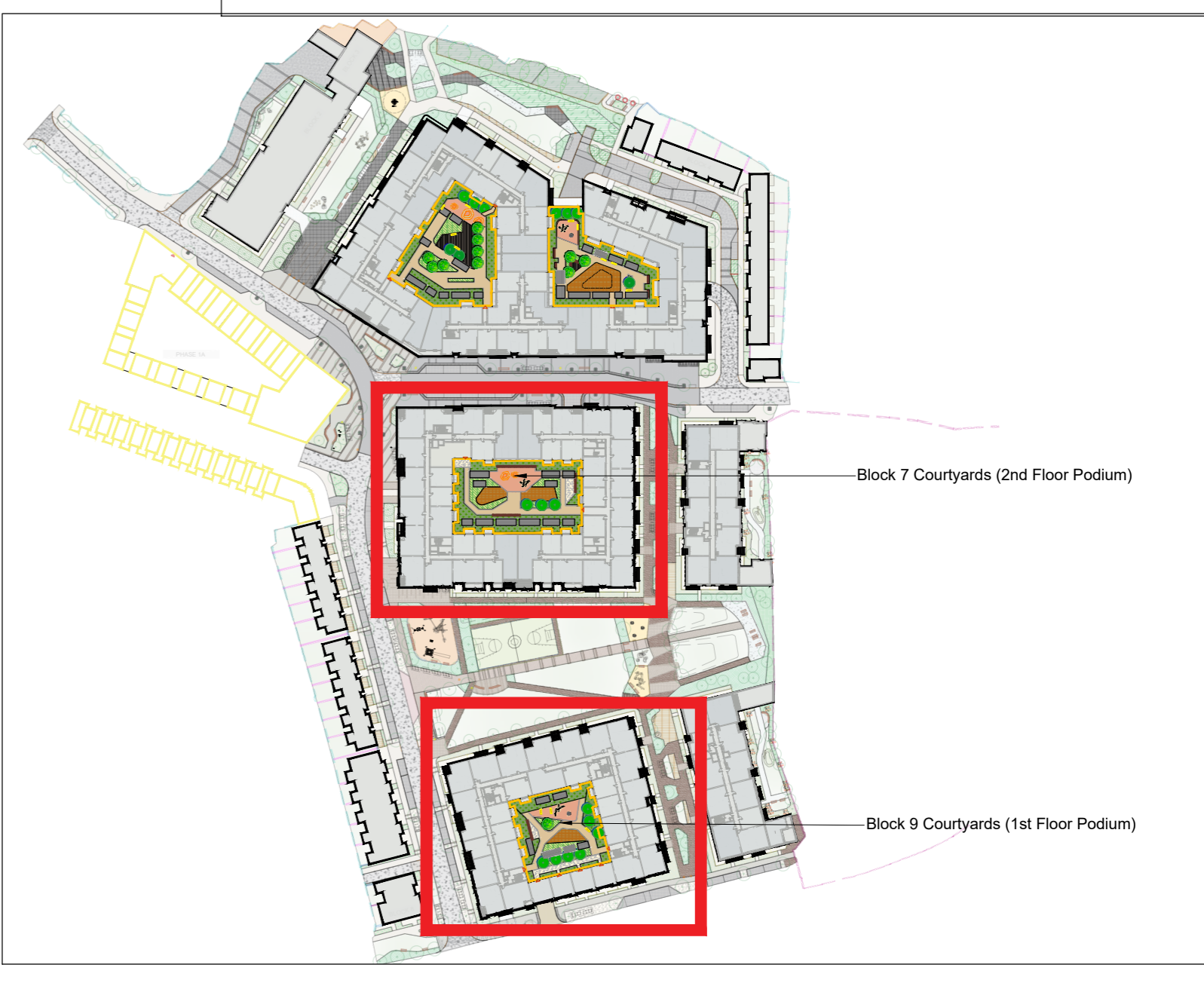
Building Entrance
Location of main entrance



Block 7 Courtyards (2nd Floor Podium)(1:250)



Block 9 Courtyards (1st Floor Podium)(1:250)



Landscape Plan - Courtyard Key Plan (1:2000)

- This drawing is intended to show landscape architectural proposals only. Please refer to Architects and Engineers drawings for relevant details of buildings, structures, roads, parking etc.
- The copyright of this drawing is vested with Murray & Associates. This drawing may not be copied or reproduced without written consent.
- All materials related to on this drawing, including plant species, are indicative and subject to change following detailed site investigation. Significant changes, if any are required, will be referred to the relevant authority for agreement.
- This drawing is not suitable for use for construction purposes.
- Discrepancies to be referred to Murray & Associates for clarification.

murray & associates
landscape architecture

14 The Seapoint Building, email@murrayassociates.com
44-45, Clontarf Road, www.murrayassociates.com
Dublin 3, D03 W43, +353 (0)1 864 0090

IFP_12/05/21 Issued for Stage 3 Planning AG JB

REV DATE REVISION DRAWN CHECKED

CLIENT
Bartra ODG Limited

PROJECT TITLE
Strategic Housing Development (SHD) at former O'Devaney, Dublin 7

SHEET TITLE
Landscape Plan - Courtyard
Block 7 & 9

SHEET NO.
1737_PL_P_02.2

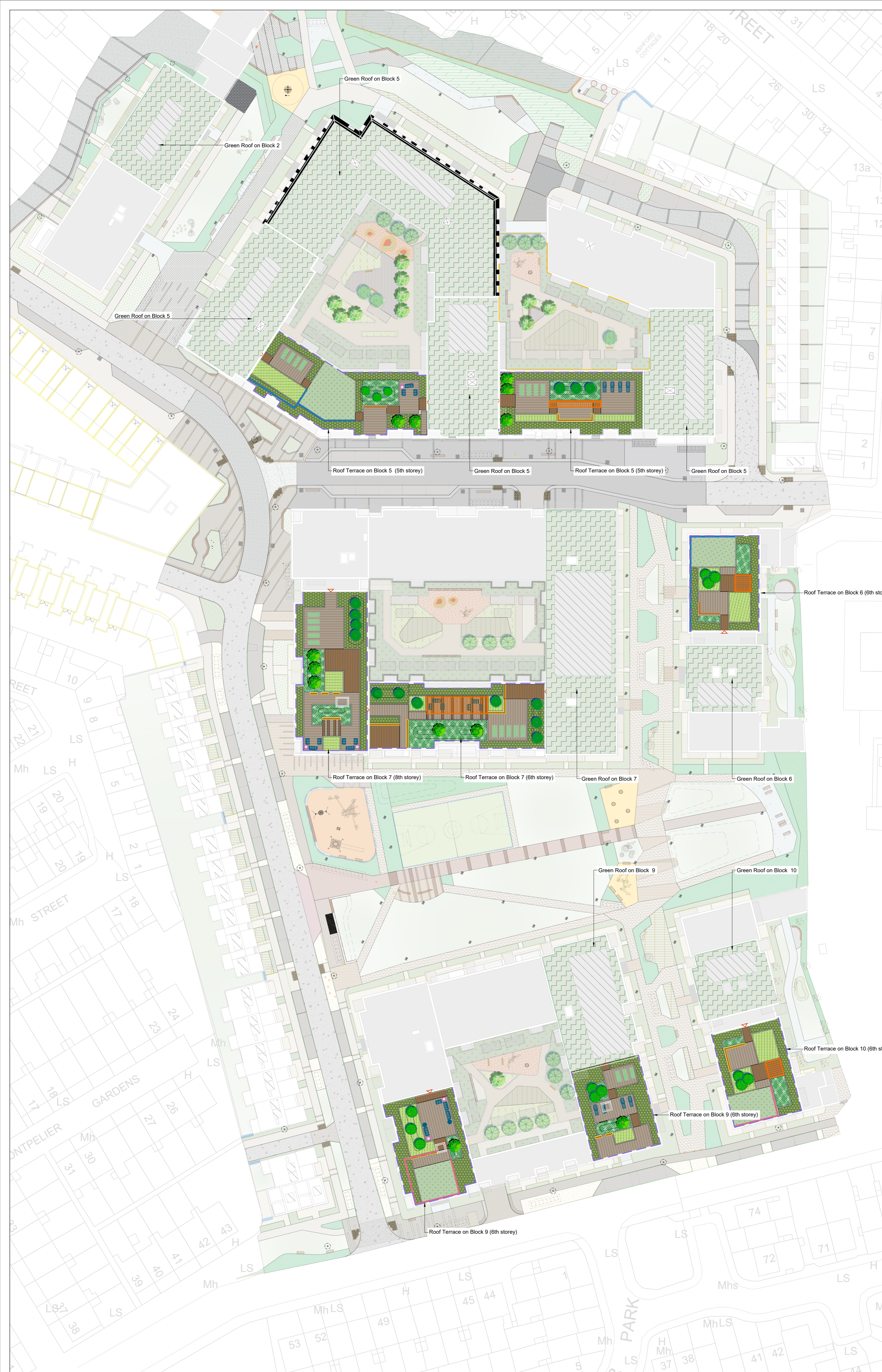
SHEET SIZE
A1

SCALE
1:250

REVISION
IFP

STAGE
Planning

DATE
12/05/21



SOFT LANDSCAPE

Proposed Trees	Common Name	Species Name	Specification	No.
T1	Eastern Redbud	<i>Cercis Canadensis</i>	multi stem	13
T2	Paperbark Maple	<i>Acer griseum</i>	multi stem	14
T3	Flowering Cherry	<i>Prunus avium</i>	multi stem	15

PL1 Roof Edge Screening Shrub Planting - 1351 sq.m
Low-maintenance planting with year-round interest on 450mm topsoil

Common Name	Species Name
Japanese holly	<i>Ilex Crenata</i>
European spindle	<i>Euonymus europaeus</i>
Common hazel	<i>Corylus avellana</i>

PL2 Medium Textured Planting - 472 sq.m
Low-maintenance planting with year-round interest on 450mm topsoil

Common Name	Species Name
Great wood-rush	<i>Luzula sylvatica</i>
Japanese sedge 'Evergold'	<i>Carex oshimensis 'Evergold'</i>
Rosemary	<i>Rosmarinus officinalis</i>
Box-leaved honeysuckle	<i>Lonicera pileata</i>
Gaulther rose	<i>Viburnum opulus</i>
Oriental fountain grass 'Karley Rose'	<i>Pennisetum 'Karley Rose'</i>
English lavender 'Hidcote'	<i>Lavandula 'Hidcote'</i>
Sweet box	<i>Sarcococca confusa</i>
Balkan clary 'Ostfriesland'	<i>Salvia nemorosa 'Ostfriesland'</i>
Heather	<i>Erica sp. x</i>

PL3 Low Textured Planting - 395 sq.m
Low-maintenance planting with year-round interest on 200-450mm topsoil

Common Name	Species Name
Lesser periwinkle	<i>Vinca minor</i>
Creeping dogwood	<i>Cornus canadensis</i>
Wildflower Mix	
Sedum Mix	

PL4 Green Roofs
Low-maintenance green roofs, to engineering specifications

HARD LANDSCAPE

P1 Composite Decking - 1570 sq.m
Non-slip composite decking with drainage underneath

P2 Artificial Turf - 428 sq.m

ELEMENT LANDSCAPE

Safety Balustrade - 660 lin.m
To be specified by architect

Wooden Trellis - 4 no.
To be determined/detailed, design to include slates and safety measure to prevent damage and climbing

Wind screen - 70 lin.m
Metal louver or perforated screen for wind protection, 1800mm from finish floor level.

Decorative screen - 72 lin.m
Timber panel screen, 1100mm high.

Free Standing Bench - 14 no.
OMOS s22 Bench or similar, as approved.
Length 1800mm, width 450mm, height 450mm, powder coated steel divider bar, fixed to the ground by means of anchoring bolts.

Edge/Seatwall Bench - 40 lin.m.
width 450mm, height 450mm composite bench on concrete base, to replace metal edge along raise planters. Omos s21 planter cantilevers seat, and/or similar approved

Lounge Furniture
Outdoor lounge furniture for residents. Exact type to be determined

Raised Planters
100-400mm raised planters. Omos s21 planter, and/or similar approved

Raised Modular Planter
1200 x 2400mm Woodscape modular planter, and/or similar approved. To be allotment or ornamental planting

Freestanding Modular Planter
Ornamental planters with colorful perennials and annuals. Planter to be powder coated metal, and/or similar approved

1. This drawing is intended to show landscape architectural proposals only. Please refer to Architects and Engineers drawings for relevant details of buildings, structures, roads, parking, etc.

2. The copyright of this drawing is vested with Murray & Associates. This drawing may not be copied or reproduced without written consent.

3. All materials referred to on this drawing, including plant species, are indicative and subject to change following detailed site investigation. Significant changes, if any are required, will be referred to the relevant authority for agreement.

4. This drawing is not suitable for use for construction purposes.

5. Discrepancies to be referred to Murray & Associates for clarification.

murray & associates
landscape architecture

14 The Seapoint Building, Dublin 3, D03 W4E3
44-45, Clontarf Road, Dublin 3, D03 W4E3
www.murray-associates.com
+353 (0)1 864 0066

IFP_12/05/21 Issued for Stage 3 Planning AG JB

REV#	DATE	REVISION	DRAWN	CHECKED

CLIENT: Bartra ODG Limited

PROJECT TITLE: Strategic Housing Development (SHD) at former O'Devaney, Dublin 7

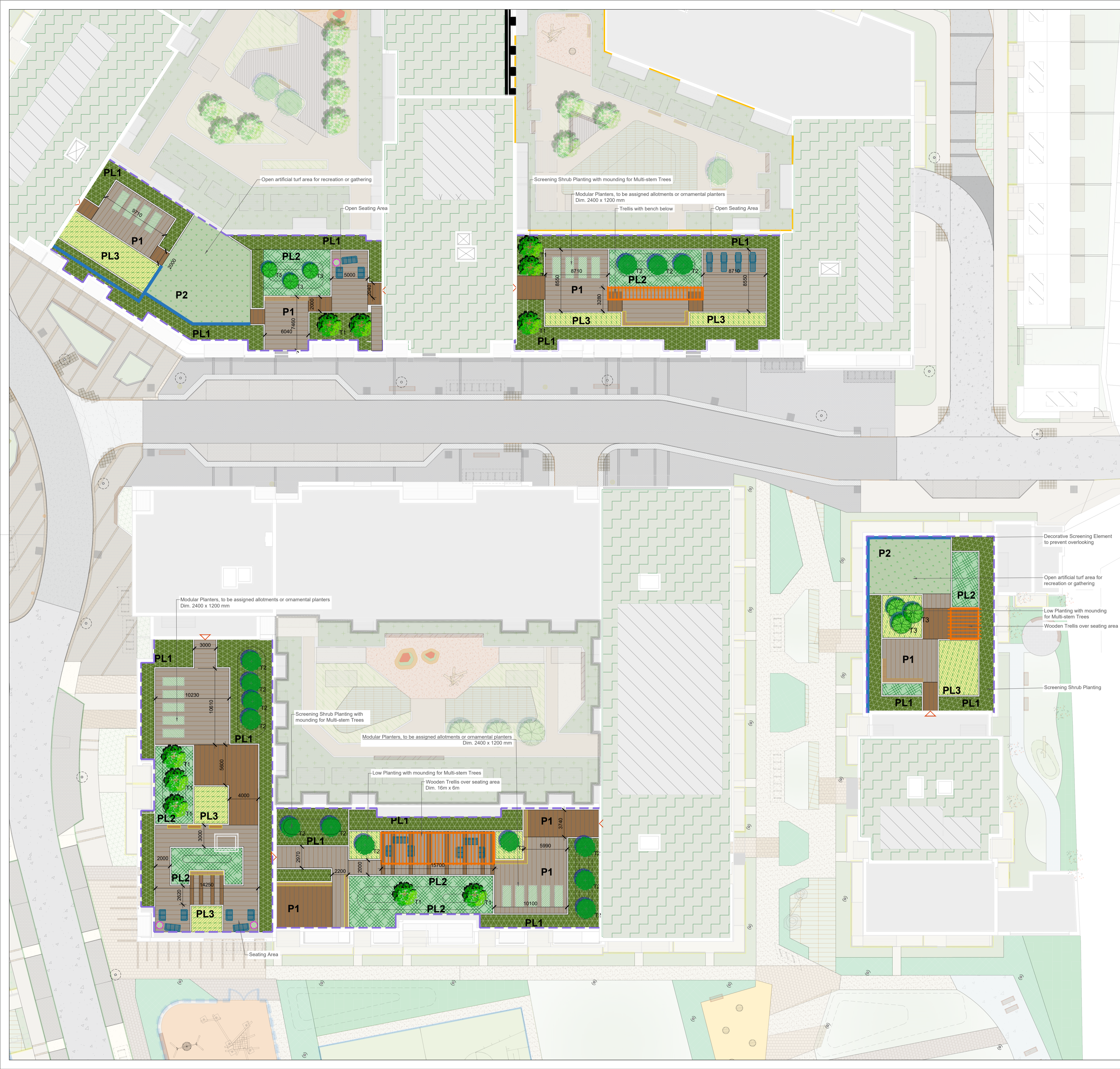
SHEET TITLE: Landscape Plan - Roof Level Masterplan

SHEET NO.	SHEET SIZE
1737_PL_P_03	A1

SCALE	REVISION
1:500	IFP

STAGE	DATE
Planning	12/05/21

Copyright Murray and Associates, 2020



SOFT LANDSCAPE

Proposed Trees	Common Name	Species Name	Specification	No.
T1	Eastern Redbud	<i>Cercis Canadensis</i>	multi stem	13
T2	Paperbark Maple	<i>Acer griseum</i>	multi stem	14
T3	Flowering Cherry	<i>Prunus avium</i>	multi stem	15

PL1 Roof Edge Screening Shrub Planting - 1351 sq.m
Low-maintenance planting with year-round interest on 450mm topsoil

Common Name	Species Name
Japanese holly	<i>Ilex Crenata</i>
European spindle	<i>Euonymus europaeus</i>
Common hazel	<i>Corylus avellana</i>

PL2 Medium Textured Planting - 472 sq.m
Low-maintenance planting with year-round interest on 450mm topsoil

Common Name	Species Name
Great wood-rush	<i>Luzula sylvatica</i>
Japanese sedge 'Evergold'	<i>Carex oshimensis 'Evergold'</i>
Rosemary	<i>Rosmarinus officinalis</i>
Box-leaved honeysuckle	<i>Lonicera pileata</i>
Guelder rose	<i>Viburnum opulus</i>
Oriental fountain grass 'Karley Rose'	<i>Pennisetum 'Karley Rose'</i>
English lavender 'Hidcote'	<i>Lavandula 'Hidcote'</i>
Sweet box	<i>Sarcococca confusa</i>
Balkan clary 'Ostriesland'	<i>Salvia nemorosa 'Ostriesland'</i>
Heather	<i>Erica sp.x</i>

PL3 Low Textured Planting - 395 sq.m
Low-maintenance planting with year-round interest on 200-450mm topsoil

Common Name	Species Name
Lesser periwinkle	<i>Viola minor</i>
Creeping dogwood	<i>Cornus canadensis</i>
Wildflower Mix	
Sedum Mix	

PL4 Green Roofs
Low-maintenance green roofs, to engineering specifications

HARD LANDSCAPE

P1 Composite Decking - 1570 sq.m
Non-slip composite decking with drainage underneath

P2 Artificial Turf - 428 sq.m

ELEMENT LANDSCAPE

Safety Balustrade - 660 lin.m
To be specified by architect

Wooden Trellis - 4 no.
To be determined/detailed, design to include slates and safety measure to prevent damage and climbing

Wind screen - 70 lin.m
Metal louver or perforated screen for wind protection, 1800mm from finish floor level.

Decorative screen - 72 lin.m
Timber panel screen, 1100mm high.

Free Standing Bench - 14 no.
OMOS s22 Bench or similar, as approved.
Length 1800mm, width 450mm, height 450mm, powder coated steel divider bar, fixed to the ground by means of anchoring bolts.

Edge/Seatwall Bench - 40 lin.m.
width 450mm, height 450mm composite bench on concrete base, to replace metal edge along raise planters. Omos s21 planter cantilever seat, and/or similar approved

Lounge Furniture
Outdoor lounge furniture for residents. Exact type to be determined

Raised Planters
100-400mm raised planters. Omos s21 planter, and/or similar approved

Raised Modular Planter
1200 x 2400mm Woodscape modular planter, and/or similar approved. To be allotment or ornamental planting

Freestanding Modular Planter
Ornamental planters with colorful perennials and annuals. Planter to be powder coated metal, and/or similar approved

1. This drawing is intended to show landscape architectural proposals only. Please refer to Architects and Engineers drawings for relevant details of buildings, structures, roads, parking, etc.
2. The copyright of this drawing is vested with Murray & Associates. This drawing may not be copied or reproduced without written consent.
3. All materials referred to on this drawing, including plant species, are indicative and subject to change following detailed site investigation. Significant changes, if any are required, will be referred to the relevant authority for agreement.
4. This drawing is not suitable for use for construction purposes.
5. Discrepancies to be referred to Murray & Associates for clarification.

murray & associates
landscape architecture

16 The Sepoim Building, 44-45 Confort Road, Dublin-3, D03 R6F3 | mail@murrayassociates.com | www.murrayassociates.com | +353 (0)1 854 0990

IFP 12/05/21	Issued for Stage 3 Planning, AG	JB
REV DATE	REVISION	DRAWN CHECKED

CLIENT: Bartra ODG Limited

PROJECT TITLE: Strategic Housing Development (SHD) at former O'Devaney, Dublin 7

SHEET TITLE: Landscape Plan - Roof Level
Block 5, 6, & 7

SHEET NO. 1737_PL_P_03.1	SHEET SIZE A1
SCALE 1:250	REVISION IFP
STAGE Planning	DATE 12/05/21

Copyright Murray and Associates, 2020



SOFT LANDSCAPE

Proposed Trees	Common Name	Species Name	Specification	No.
T1	Eastern Redbud	<i>Cercis Canadensis</i>	multi stem	13
T2	Paperbark Maple	<i>Acer griseum</i>	multi stem	14
T3	Flowering Cherry	<i>Prunus avium</i>	multi stem	15

PL1 Roof Edge Screening Shrub Planting - 1351 sq.m
 Low-maintenance planting with year-round interest on 450mm topsoil

Common Name	Species Name
Japanese holly	<i>Ilex Crenata</i>
European spindle	<i>Euonymus europaeus</i>
Common hazel	<i>Corylus avellana</i>

PL2 Medium Textured Planting - 472 sq.m
 Low-maintenance planting with year-round interest on 450mm topsoil

Common Name	Species Name
Great wood-rush	<i>Luzula sylvatica</i>
Japanese sedge 'Evergold'	<i>Carex oshimensis 'Evergold'</i>
Rosemary	<i>Rosmarinus officinalis</i>
Box-leaved honeysuckle	<i>Lonicera pileata</i>
Guelder rose	<i>Viburnum opulus</i>
Oriental fountain grass 'Karley Rose'	<i>Pennisetum 'Karley Rose'</i>
English lavender 'Hidcote'	<i>Lavandula 'Hidcote'</i>
Sweet box	<i>Sarcococca confusa</i>
Balkan clary 'Ostfriesland'	<i>Salvia nemorosa 'Ostfriesland'</i>
Heather	<i>Erica sp.x</i>

PL3 Low Textured Planting - 395 sq.m
 Low-maintenance planting with year-round interest on 200-450mm topsoil

Common Name	Species Name
Lesser periwinkle	<i>Vinca minor</i>
Creeping dogwood	<i>Cornus canadensis</i>
Wildflower Mix	
Sedum Mix	

PL4 Green Roofs
 Low-maintenance green roofs, to engineering specifications

HARD LANDSCAPE

P1 Composite Decking - 1570 sq.m
 Non-slip composite decking with drainage underneath

P2 Artificial Turf - 428 sq.m

ELEMENT LANDSCAPE

Safety Balustrade - 660 lin.m
 To be specified by architect

Wooden Trellis - 4 no.
 To be determined/detailed, design to include slates and safety measure to prevent damage and climbing

Wind screen - 70 lin.m
 Metal louver or perforated screen for wind protection, 1800mm from finish floor level.

Decorative screen - 72 lin.m
 Timber panel screen, 1100mm high.

Free Standing Bench - 14 no.
 Omos s22 Bench or similar, as approved. Length 1800mm, width 450mm, height 450mm, powder coated steel divider bar, fixed to the ground by means of anchoring bolts.

Edge/Seatwall Bench - 40 lin.m.
 width 450mm, height 450mm composite bench on concrete base, to replace metal edge along raise planters. Omos s21 planter cantilevers seat, and/or similar approved

Lounge Furniture
 Outdoor lounge furniture for residents. Exact type to be determined

Raised Planters
 100-400mm raised planters. Omos s21 planter, and/or similar approved

Raised Modular Planter
 1200 x 2400mm Woodscape modular planter, and/or similar approved. To be allotment or ornamental planting

Freestanding Modular Planter
 Ornamental planters with colorful perennials and annuals. Planter to be powdered coated metal, and/or similar approved

1. This drawing is intended to show landscape architectural proposals only. Please refer to Architects and Engineers drawings for relevant details of buildings, structures, roads, parking, etc.
2. The copyright of this drawing is vested with Murray & Associates. This drawing may not be copied or reproduced without written consent.
3. All materials referred to on this drawing, including plant species, are indicative and subject to change following detailed site investigation. Significant changes, if any are required, will be referred to the relevant authority for agreement.
4. This drawing is not suitable for use for construction purposes.
5. Discrepancies to be referred to Murray & Associates for clarification.

murray & associates
 landscape architecture

16 The Seapoint Building, mail@murrayassociates.com
 44-45 Canal Road, www.murrayassociates.com
 Dublin-3, D03 R6F3 +353 (0)1 854 0990

IFP 12/05/21	Issued for Stage 3 Planning, AG	JB
REV#	DATE	REVISION
		[DRAWN] [CHECKED]

CLIENT
 Bartra ODG Limited

PROJECT TITLE
 Strategic Housing Development (SHD) at former O'Devaney, Dublin 7

SHEET TITLE
 Landscape Plan - Roof Level
 Block 9 & 10

SHEET NO. 1737_PL_P_03.2	SHEET SIZE A1
SCALE 1:250	REVISION IFP
STAGE Planning	DATE 12/05/21